


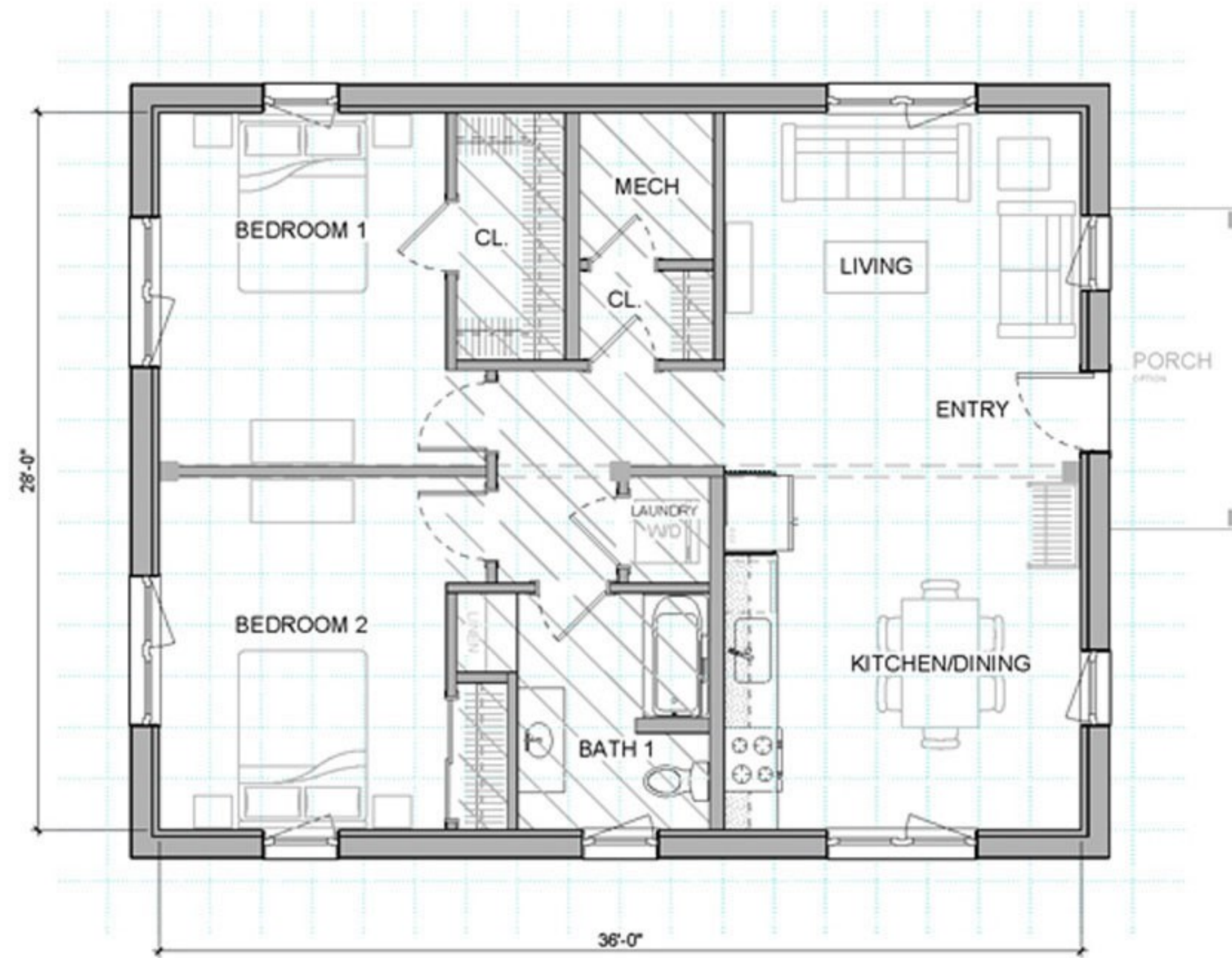
XYLA 112 2836

TOTAL 1,153 SF

OPTIONS SHOWN:
entry porch

 lower ceiling area

 2'-0" GRID



Front Elevation



Side Elevation



Back Elevation




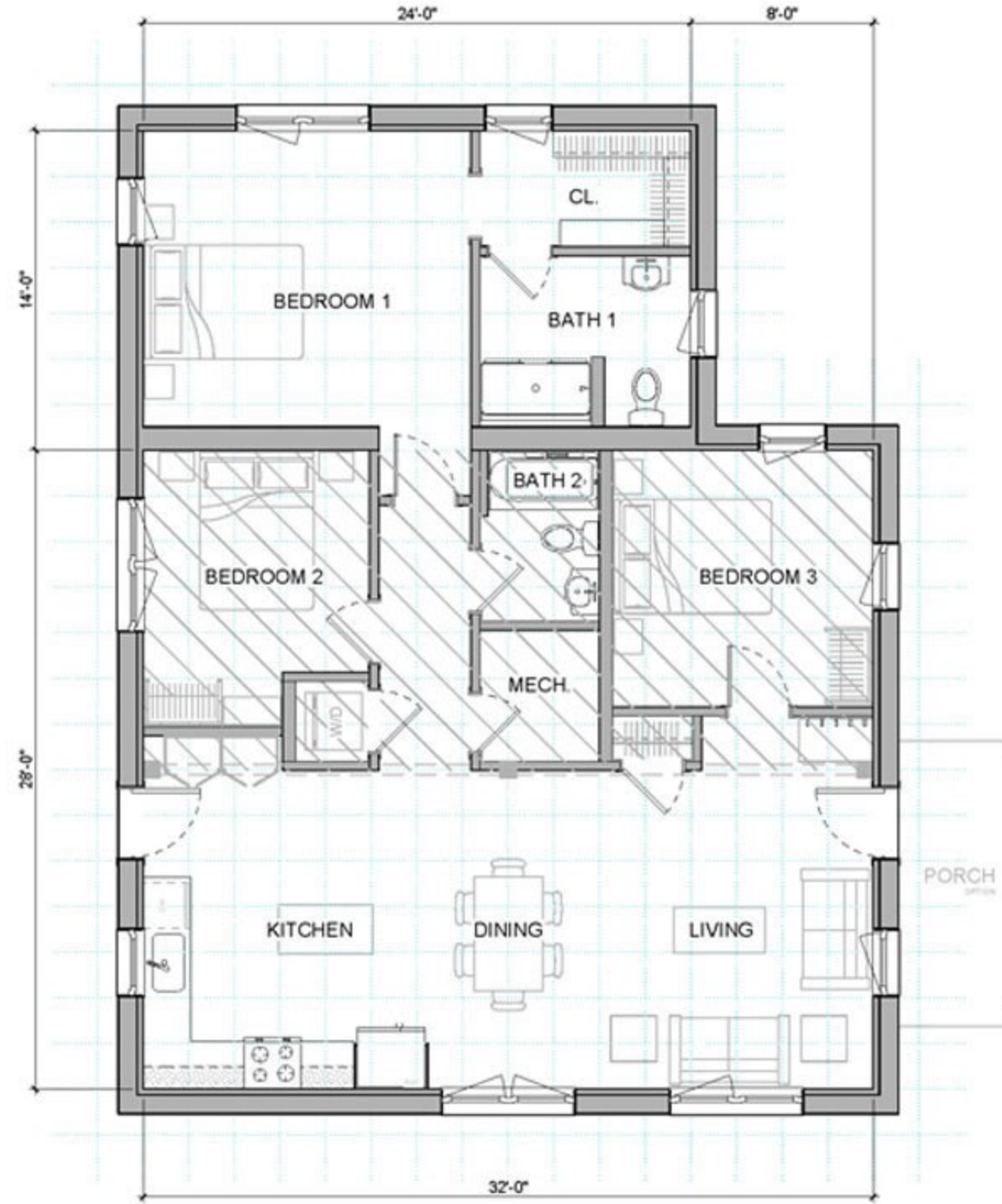
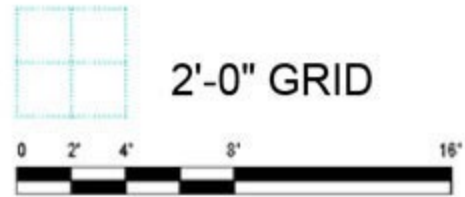
Side Elevation

XYLA 123 2832

TOTAL 1,400 SF

OPTIONS SHOWN:
entry porch

 lower ceiling area



V



Front Elevation



Side Elevation



Back Elevation




Side Elevation

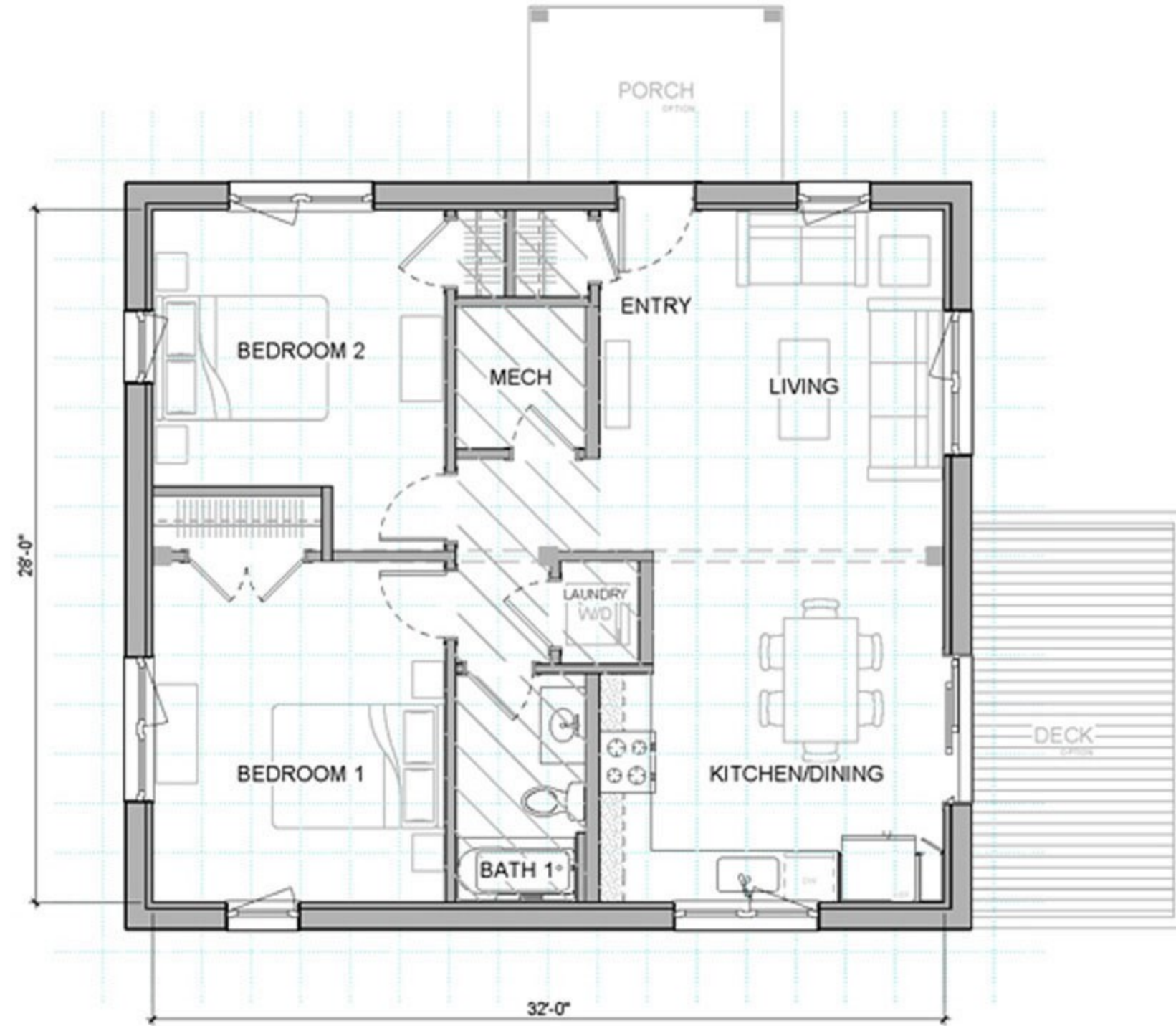
XYLA 212 2832

TOTAL 1,032 SF

OPTIONS SHOWN:
deck
entry porch

 lower ceiling area

 2'-0" GRID



Front Elevation



Side Elevation



Back Elevation




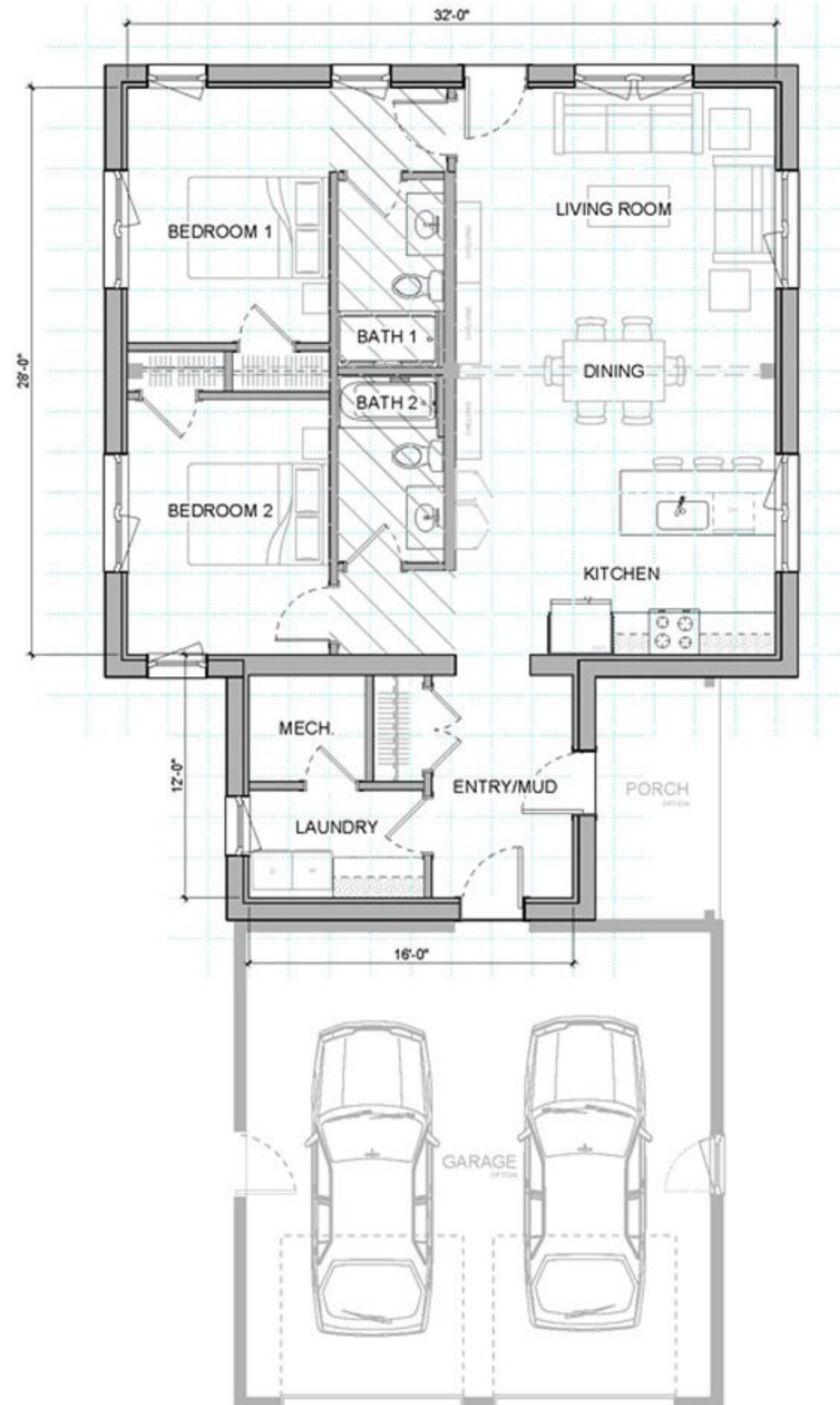
Side Elevation

XYLA 322A 2832

TOTAL 1,250 SF

OPTIONS SHOWN:
entry porch
garage

 lower ceiling area



Front Elevation



Side Elevation



Back Elevation





Side Elevation

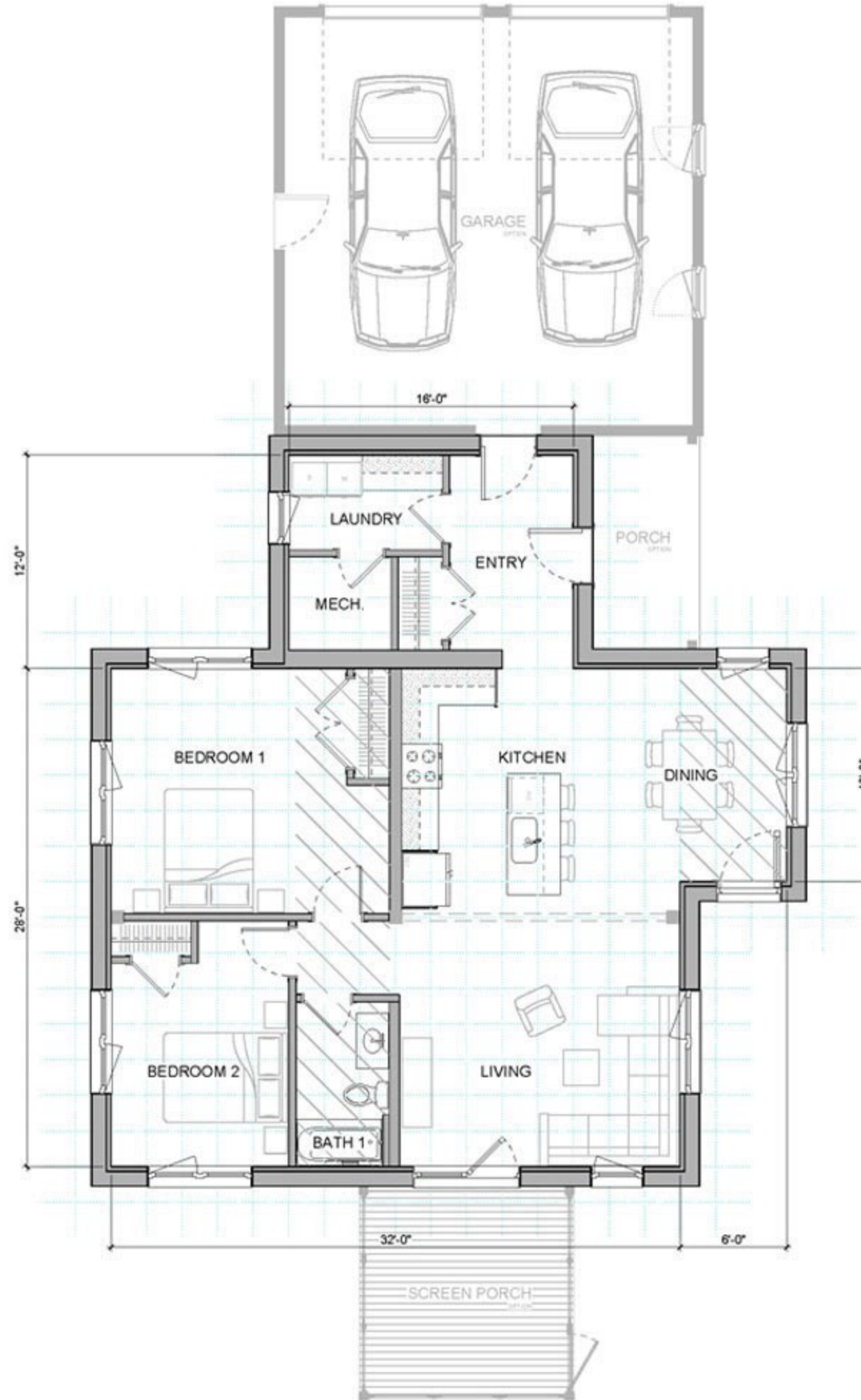
XYLA 332A 2832

TOTAL 1,335 SF

OPTIONS SHOWN:
entry porch
garage

 lower ceiling area

 2'-0" GRID



Front Elevation



Side Elevation



Back Elevation



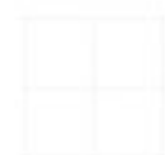
Side Elevation

XYLA STREAMLINE E3

FIRST FLOOR: 1,474 SF
 TOTAL: 1,474 SF

OPTIONS SHOWN:

- ENTRY PORCH
- 12X12 SCREEN PORCH
- 6X12 BUMPOUT
- 12X16 CONNECTOR
- 2 CAR GARAGE



2'-0" GRID

AREA OF DROPPED CEILING



FRONT ELEVATION



SIDE ELEVATION



BACK ELEVATION



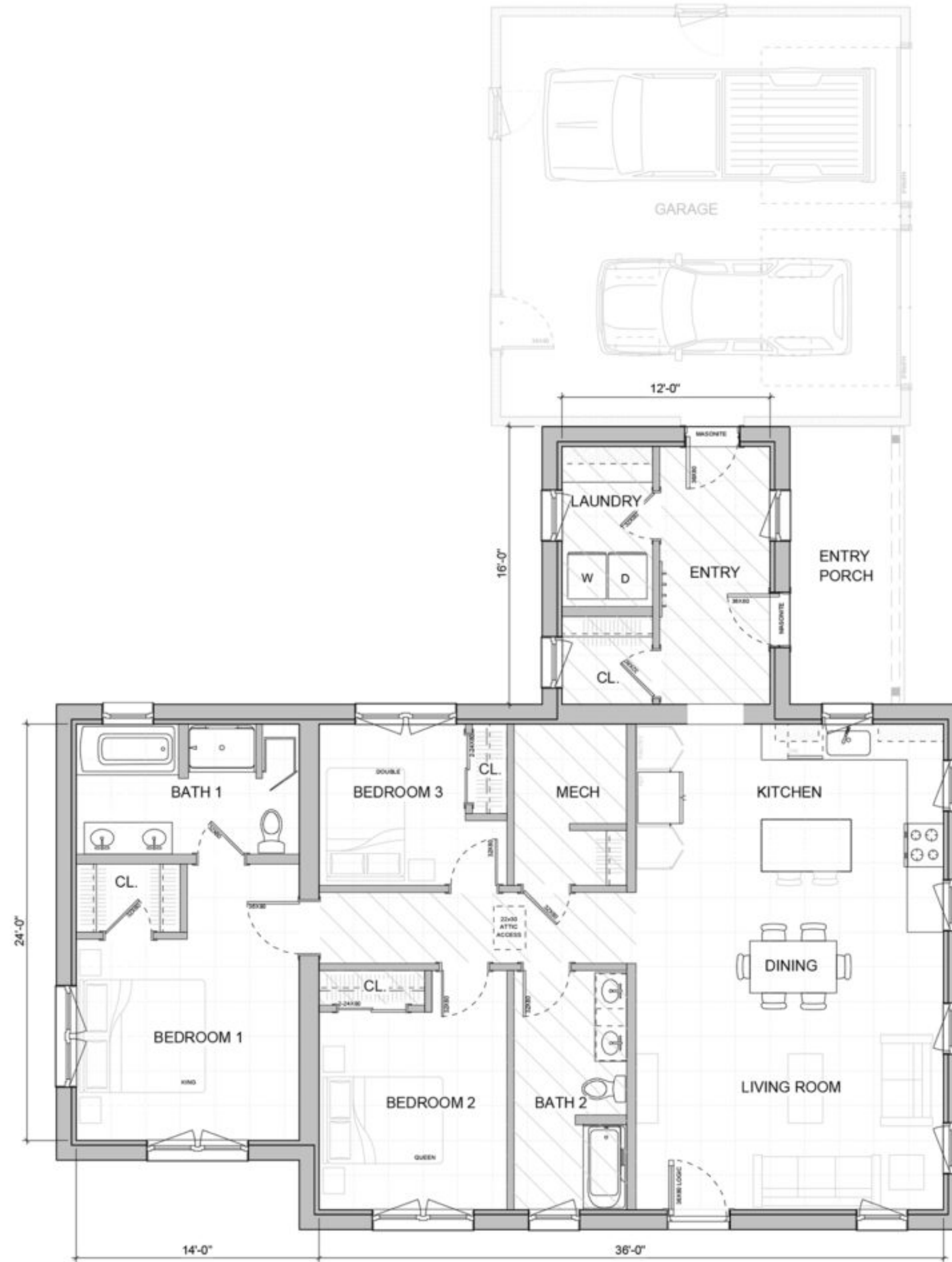
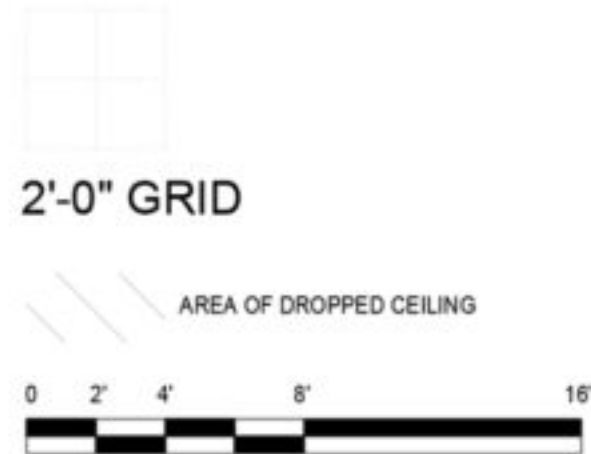
SIDE ELEVATION

XYLA STREAMLINE E5

FIRST FLOOR: 1,756 SF
 TOTAL: 1,756 SF

OPTIONS SHOWN:

- ENTRY PORCH
- 14X24 BEDROOM SUITE
- 6X12 BUMPOUT
- 12X16 CONNECTOR
- 2 CAR GARAGE



FRONT ELEVATION



SIDE ELEVATION



BACK ELEVATION



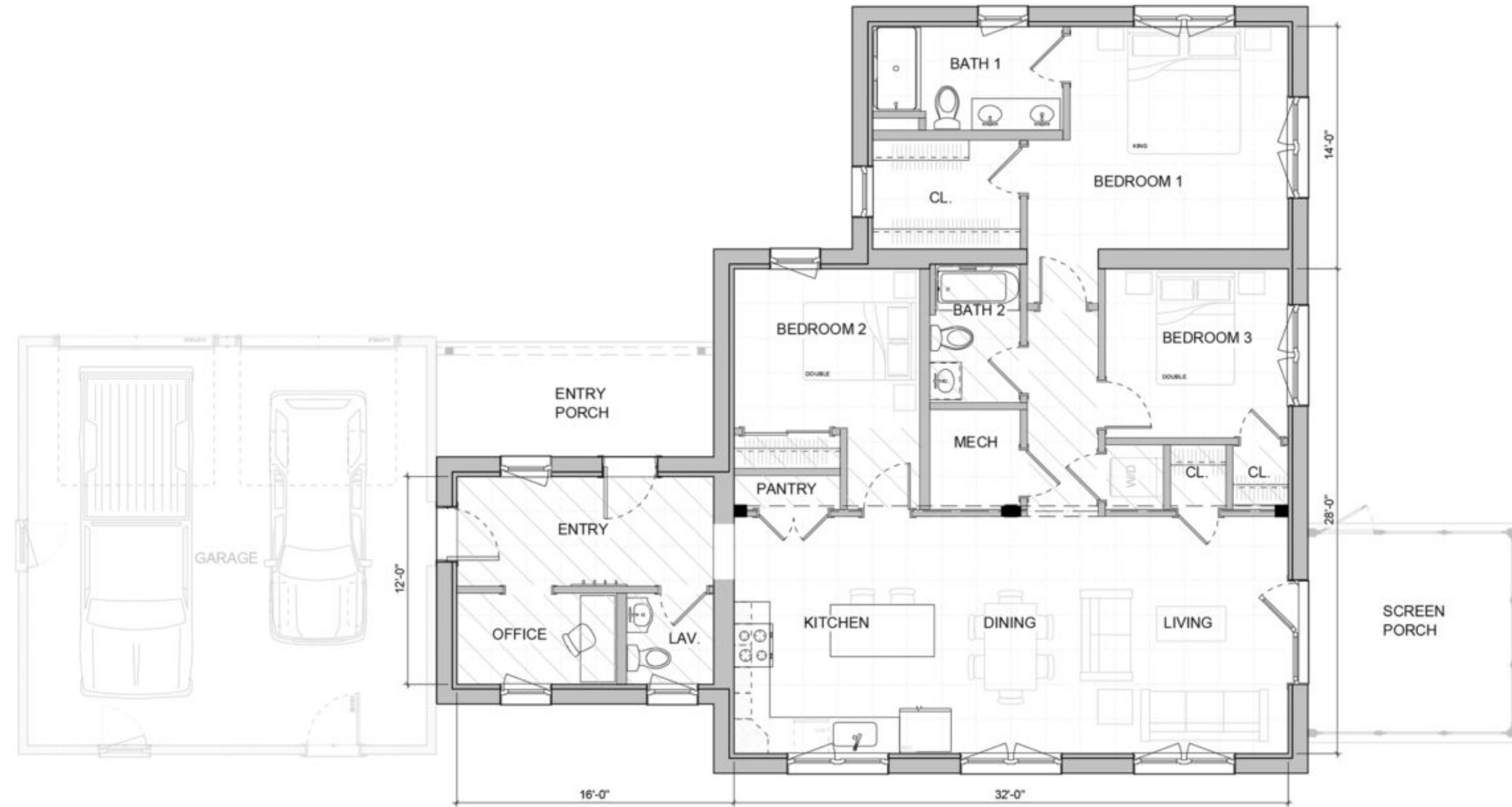
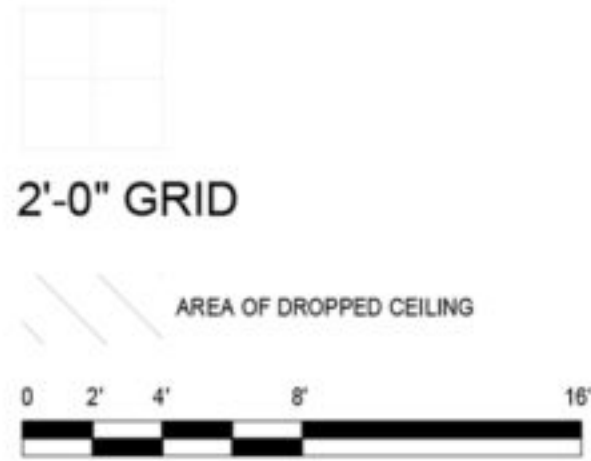
SIDE ELEVATION

XYLA STREAMLINE G5

FIRST FLOOR: 1,635 SF
 TOTAL: 1,635 SF

OPTIONS SHOWN:

- ENTRY PORCH
- 12X12 SCREEN PORCH
- 14X24 BEDROOM SUITE
- 12X16 CONNECTOR
- 2 CAR GARAGE



SEE UNITYHOMES.COM > DESIGNS > XYLA FOR OPTIONS, SELECTIONS, AND SPECIFICATIONS



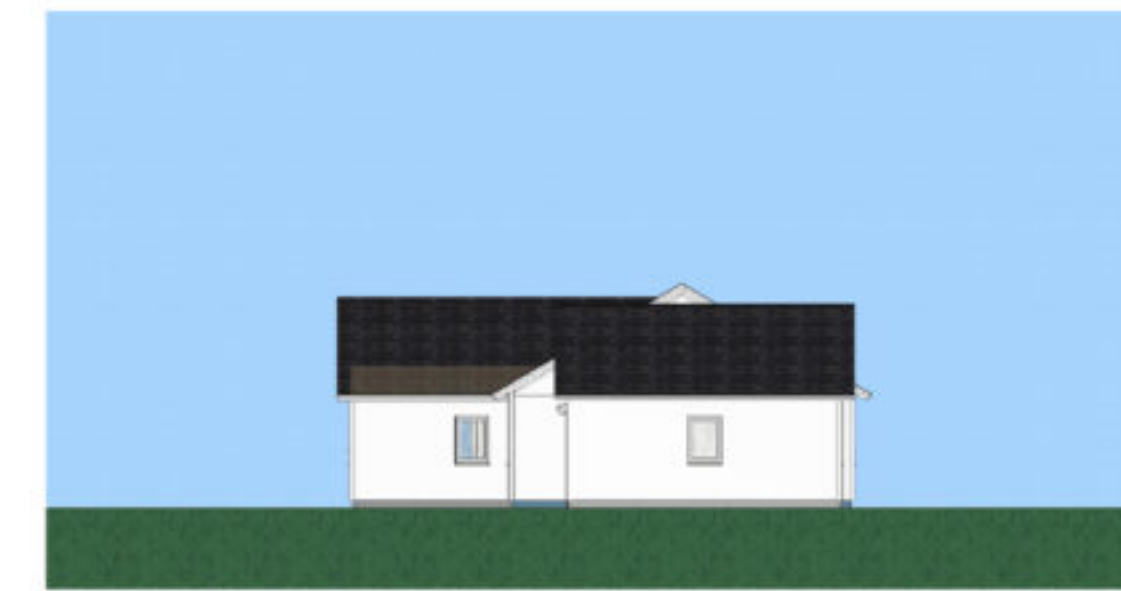
FRONT ELEVATION



SIDE ELEVATION



BACK ELEVATION



SIDE ELEVATION